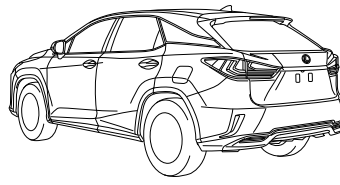
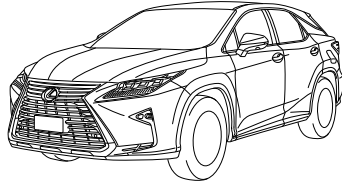


RX450h

Emergency Response

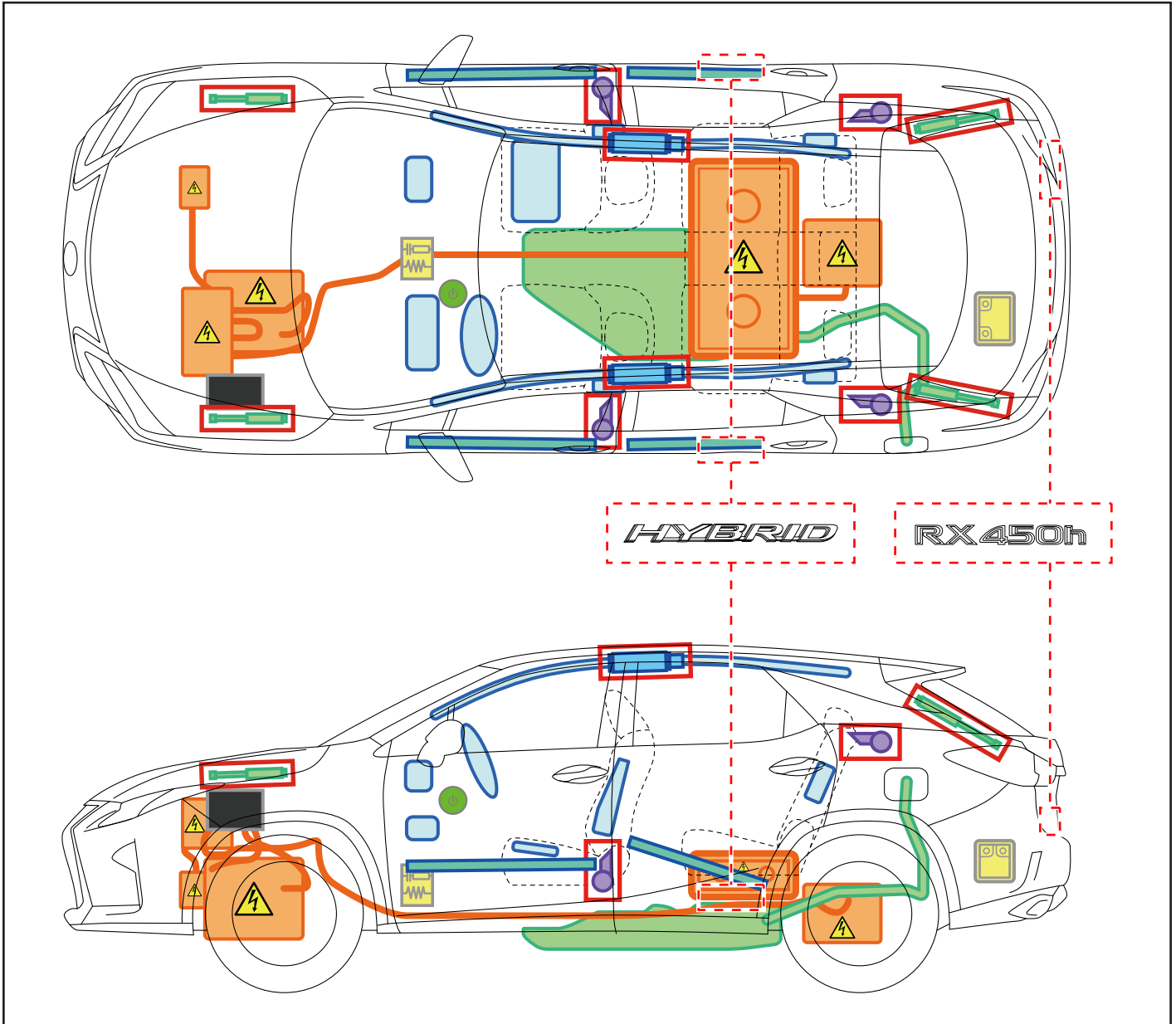
Quick Guide













MY: 2016 -



LEXUS

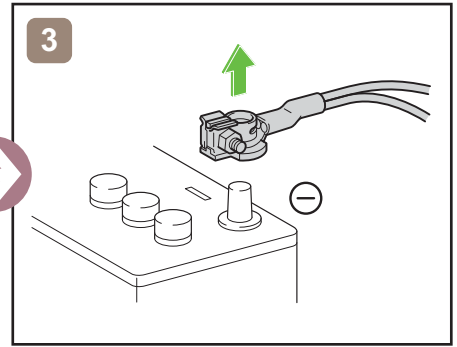
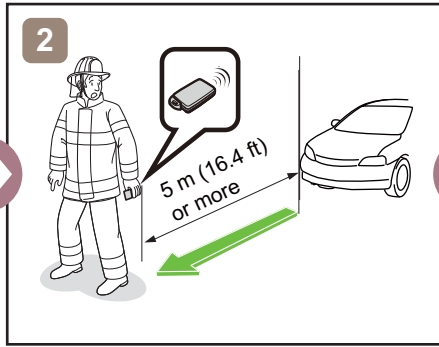
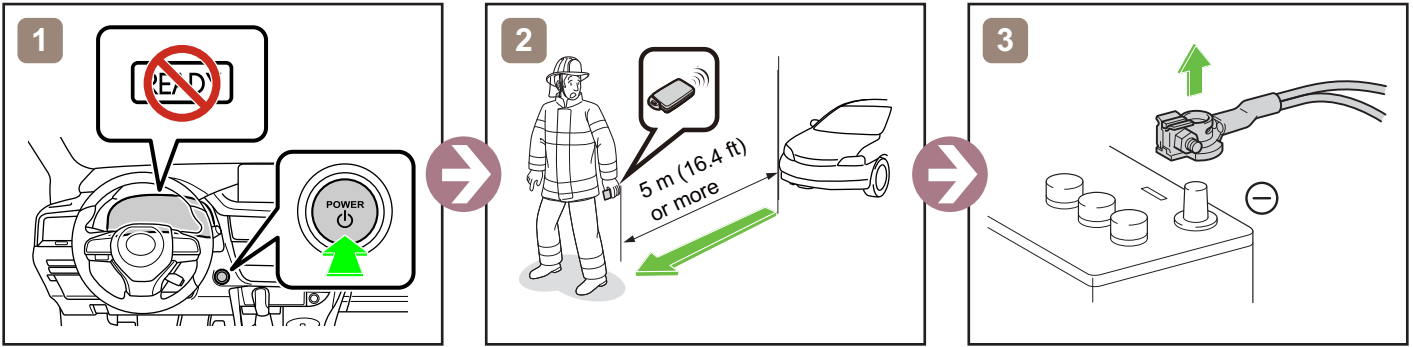
LEXUS
HYBRID
DRIVE



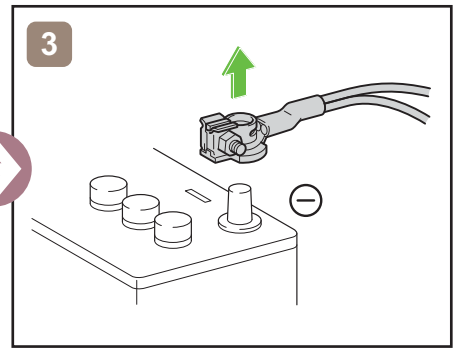
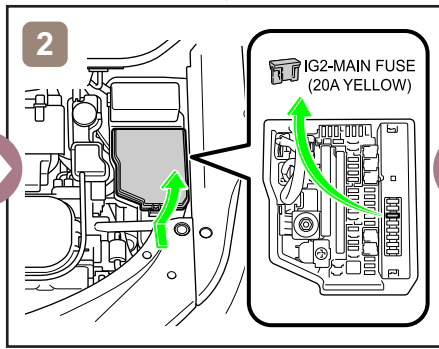
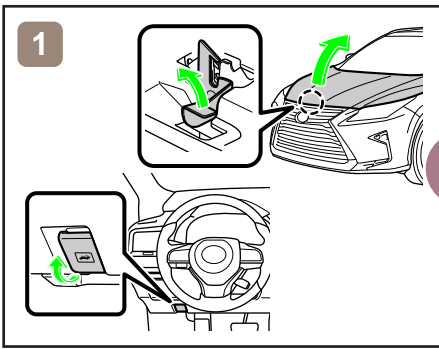
	IG/POWER SW		Fuse Box		12V Battery
	Airbag (incl. Inflator)		Inflator		High Voltage Battery
	High Voltage Components		Fuel Tank		Gas-filled Damper
	Seat Belt Pretensioner (Gas Generator)		Structural Reinforcements		Airbag Computer
-	-	-	-	-	-

RXHV20_LHD_1

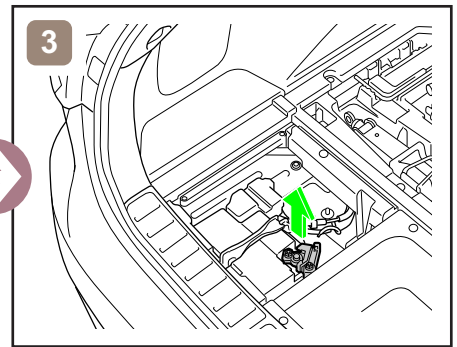
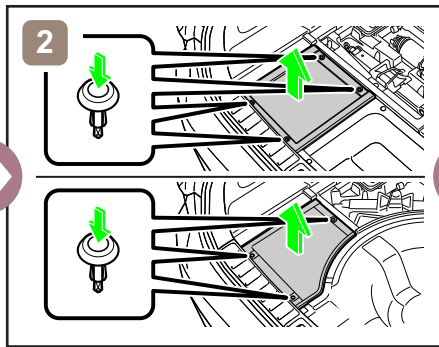
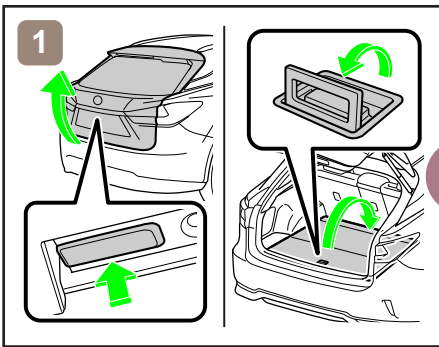
Disable Vehicle



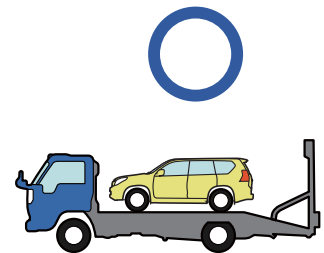
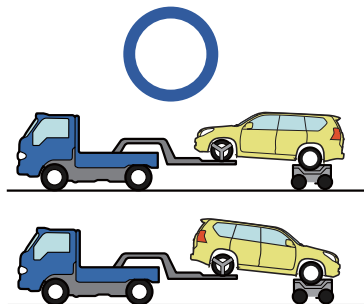
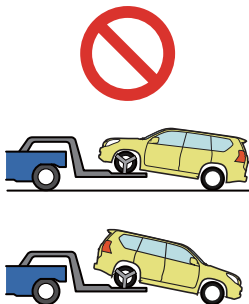
or



Access to 12V Battery



Towing Information



More details, please refer to "Emergency Response Guide".
<http://www.techinfo.toyota.com>