

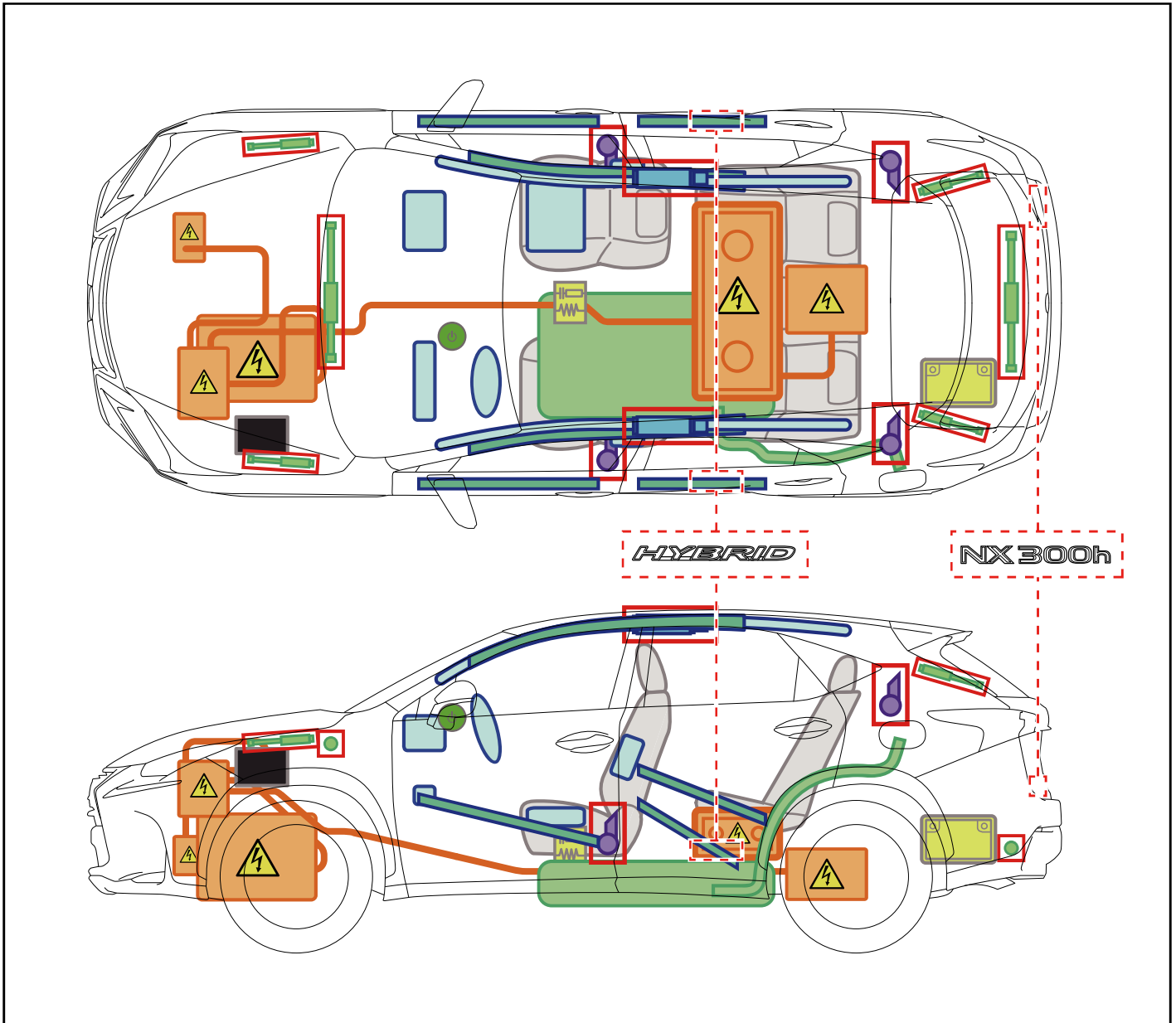
NX300h

Emergency Response Quick Guide

MY: 2015 -

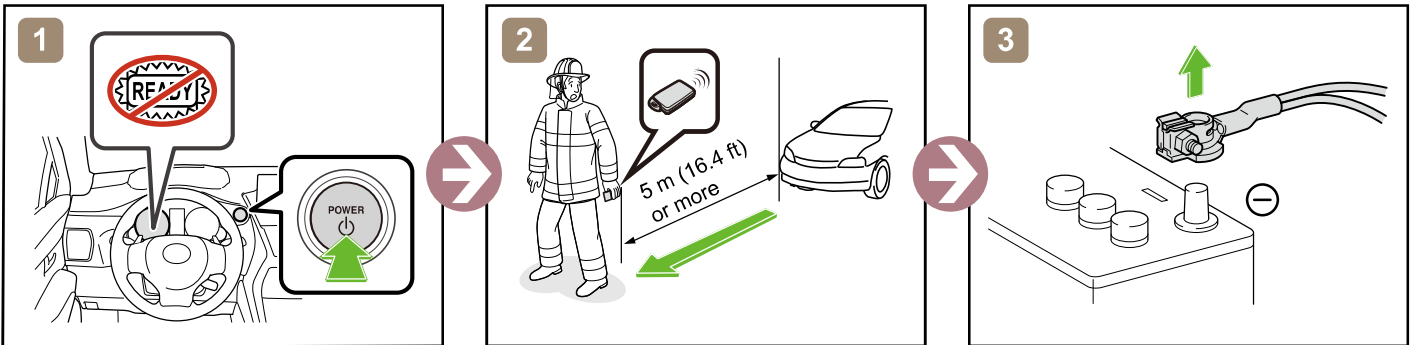


**LEXUS
HYBRID
DRIVE**

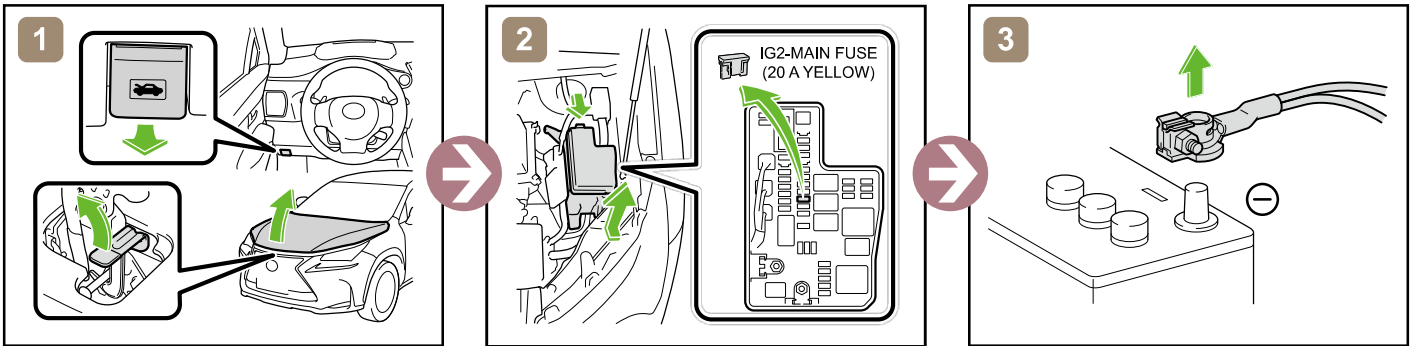


	IG/POWER SW		Fuse Box		12V Battery
	Airbag (incl. Inflator)		Inflator		High Voltage Battery
	High Voltage Components		Fuel Tank		Gas-filled Damper
	Seat Belt Pretensioner (Gas Generator)		Structural Reinforcements		Airbag Computer
—	—	—	—	—	—

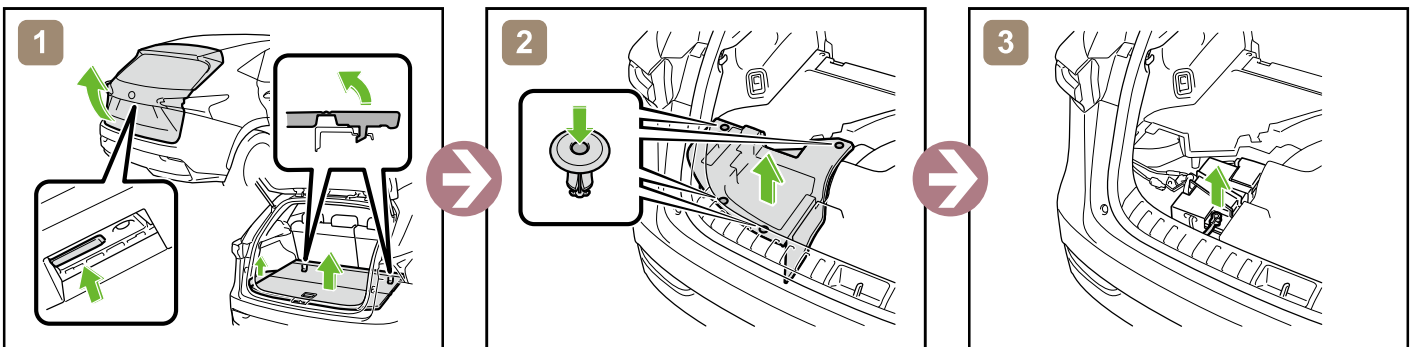
Disable Vehicle



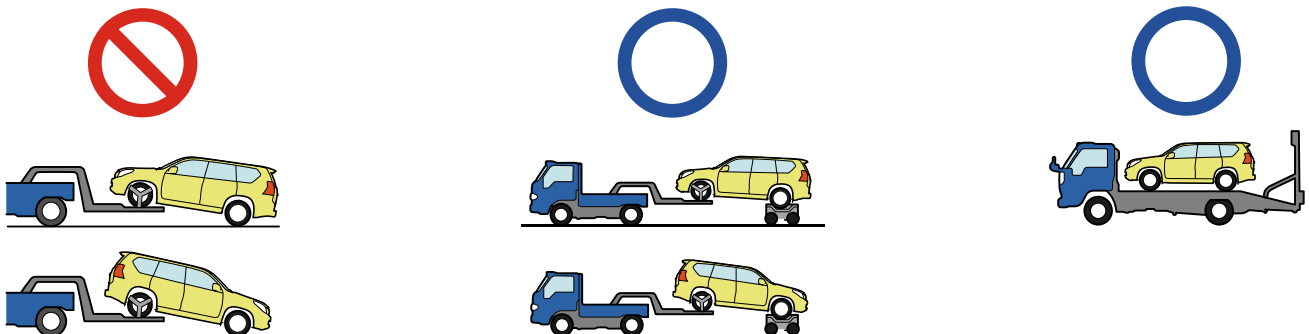
or



Access to 12V Battery



Towing Information



More details, please refer to "Emergency Response Guide".
<http://www.technifo.toyota.com>